

**GUIDELINES
FOR SAFE
REOPENING &
CELEBRATION
OF MASS**

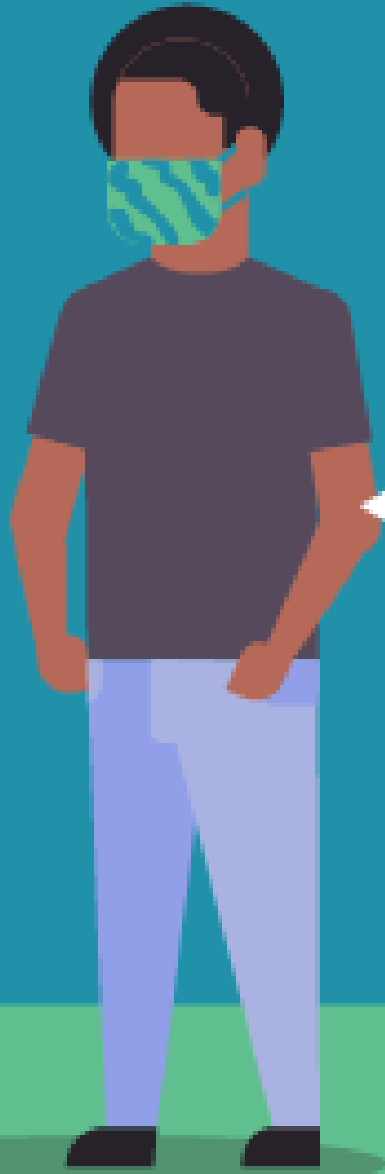


**CHURCH OF
ST. ANTHONY,
KL**

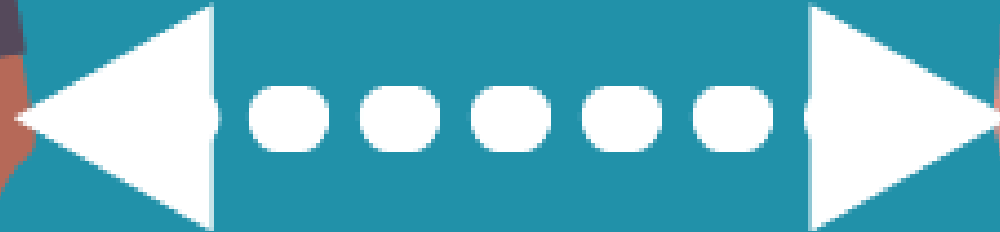
HOW DOES COVID-19 SPREAD?

COVID-19 mainly spreads from person to person via respiratory droplets released when an infected person coughs, sneezes, when in close contact or in a close proximity of 1 metre for more than 15 minutes.

It can also spread through eyes, nose and mouth when in contact with contaminated surfaces.



THE NEW NORM



**SOCIAL
DISTANCING
(1 METRE)**



SOPs for participation of
HOLY MASS
under the Post-CMCO period



Archdiocese
of Kuala Lumpur

www.archkl.org
🐦 archkl 📷 arch_kl
📌 <http://t.me/archkl>

WHO IS NOT ENCOURAGED TO ATTEND?

- Individuals **above the age of 70** and children **below the age of 12**.
- Individuals who are exhibiting symptoms like **fever, cough, respiratory issues and cold**.
- Individuals who have **diabetes, cancer and other types of disease**.
- **Pregnant women**.

RESTRICTIONS



1 Parishioners aged over 70 and children aged below 12 **not allowed**



2 Parishioners who are unwell or have symptoms of infection (such as cough, fever, flu, and respiratory discomfort) to **stay home**



3 All non-liturgical gatherings (meetings, Catechism class, RCIA sessions) are **suspended until further notice**



4 Apart from Mass, public gatherings of any sort is **prohibited**



5 Mass in each parish is **limited to one third** of the church's seating capacity



WHAT DO I NEED TO DO IF I WISH TO ATTEND MASS?

- Kindly visit <https://www.stanthonykl.com/> for registration.
- For further assistance on registration, kindly contact your **BEC Coordinator** or **Parish Office**.
- Due to limited seating capacity and number of masses, everyone would have to go through a **registration process** and will be notified through email on the confirmation
- Wear a **face mask** throughout the celebration of mass.
- Download the **MySejahtera** application for contact listing and tracing purpose.

WHAT CAN I EXPECT WHEN I ARRIVE AT CHURCH?

- Maintain **social distancing of 1 metre** at all times (queuing, seating, etc.)
- **Temperature check, confirmation of attendance and hand sanitising** will be done at the registration counter. (please ensure that you arrive **45 minutes early**).
- If temperature reading is **above 37.5°C**, you will **not be allowed** to enter the church.
- Seat number will be provided at the registration counter. You're not allowed to change seats.
- Parking not allowed in church compound. Vehicles to be parked at **The Robertson car park**.
- **Scan MySejahtera QR code** at the entrance of the church.
- There will be **no Holy Water** at the entrance.

BEFORE ENTERING THE CHURCH



1
Cooperate with the instructions of the persons on duty



2
Exchange greetings with a head bow and avoid physical contact



3
Undergo temperature scanning



4
Record particulars in Visitors Book



5
Download the MySejahtera application and scan at the provided QR code for contact listing and tracing

BEFORE ENTERING THE CHURCH



Use the **hand sanitisers** provided before entering the church



Wear **face mask** at all times within the church premise



Seating will be assigned to parishioners attending mass



Always maintain **safe distancing**

WHAT CAN I EXPECT DURING MASS?

- Singing is not encouraged.
- Offering will be done at the end of mass at the exit.
- Sign of Peace – head bow only.
- Communion will only be received on hand.
- No form of blessing before/after mass.
- Do exit immediately after mass.
- **Do not gather.**

DURING MASS



Singing is discouraged.



There will be no Collection during Mass



Sign of Peace - head bow or nod. No physical contact



Maintain social distancing while sitting and queuing for Holy Communion



Face masks to be worn throughout the Mass (and when queuing for Holy Communion) except when consuming the sacred host.

WHAT ELSE MUST I TAKE NOTE OF?

- **Use of toilet is discouraged** except for an emergency.
- Do not dispose/leave face masks, wastes and other items at the pews.
- **Touching of holy images or statues are not allowed** at the moment.
- Scan **Parish QR code at exit** and complete the form. You need a QR scanner (different from MySejahtera).

WHEN LEAVING THE CHURCH



Drop your offering in the boxes prepared at the exits of the Church.



Refrain from touching statues and Holy pictures



Always maintain safe distancing and exit in an orderly manner



After Mass, to immediately exit the Church



Fellowship, communal meals and congregating before/after Mass are prohibited



Public toilets to be used only in the case of an emergency

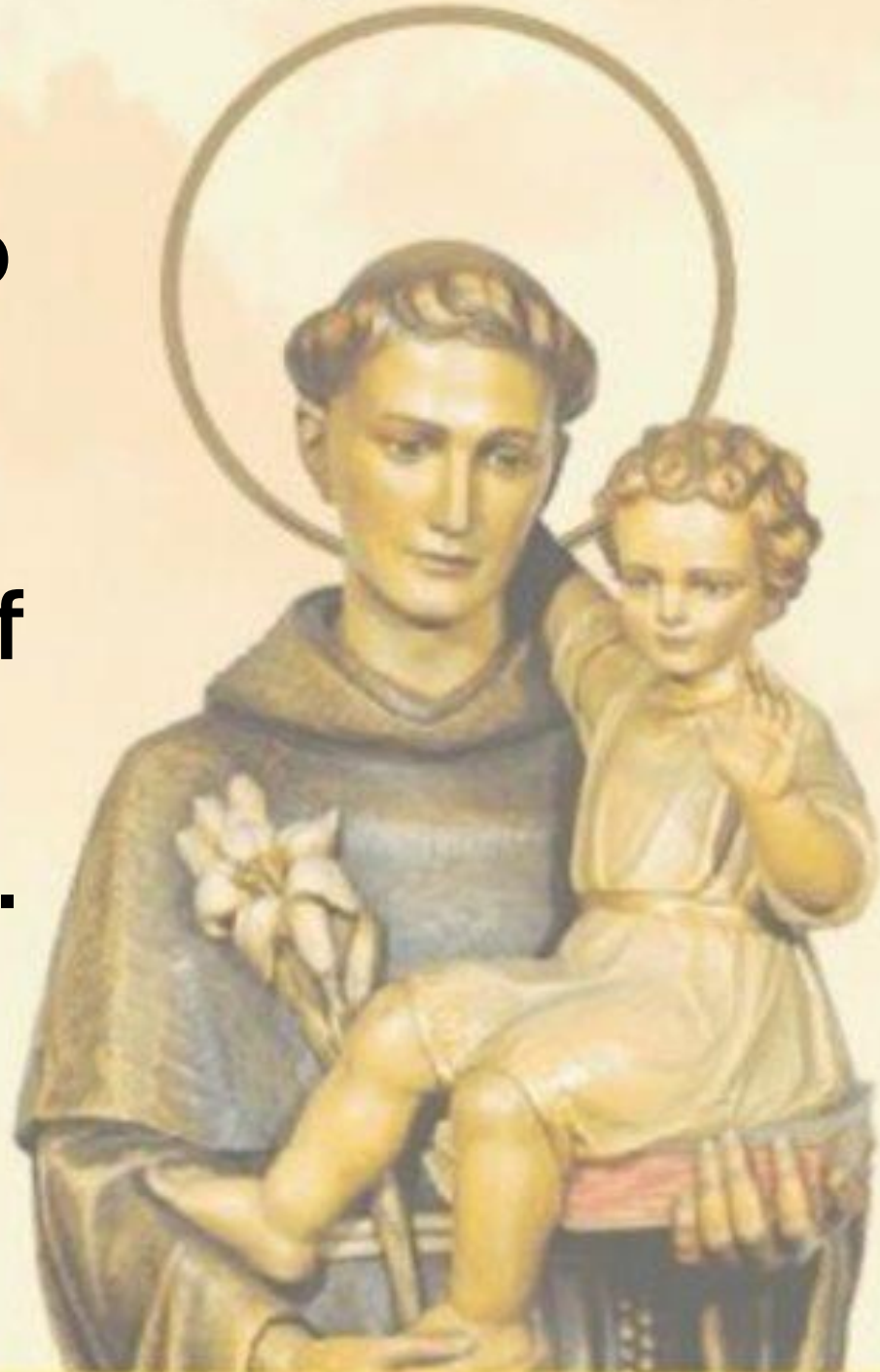


Archdiocese
of Kuala Lumpur

www.archkl.org
archkl arch_kl
<http://t.me/archkl>

**Please adhere to
all the stated
guidelines for a
safe reopening of
our church and
for our wellbeing.**

Thank you.



**St. Anthony
Pray For Us.**